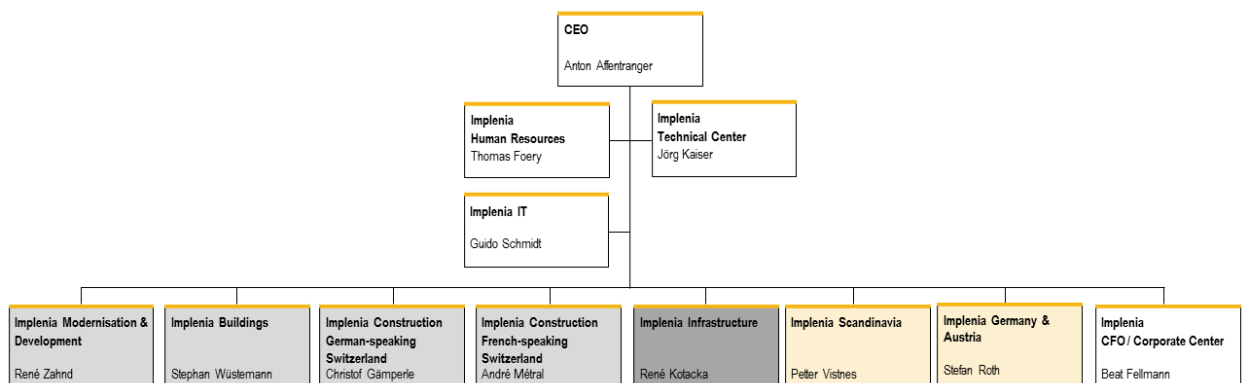


PRESS RELEASE

Existing sectorial and regional structure adjusted following acquisition of Bilfinger Construction

Dietlikon, 1 July 2015 – Implenia has adjusted its operational structure as a result of the acquisition of Bilfinger Construction (see organisation chart). The integration of the former Bilfinger Construction is reflected in three Business Units: Through its Business Unit Infrastructure Implenia offers comprehensive services for tunnelling, foundation engineering and major infrastructure projects in all its target markets. Rene Kotacka heads the unit. Implenia Scandinavia is responsible for civil works, road works, bridge construction, general civil engineering and conventional tunnelling in Norway and Sweden. It is headed by Petter Vistnes. Business Unit Germany & Austria operates in the German-speaking market outside Switzerland, working for public-sector and private customers on civil works, general civil engineering, maintenance and repair, as well as building construction (as builder and turnkey contractor). It is headed by Stefan Roth. The new organisational structure puts Implenia in an optimal position to exploit the infrastructure megatrend in Europe. From today, the units of the former Bilfinger Construction uniformly operate under the Implenia brand.



Implenia operates in Switzerland through the units Modernisation, Development, Buildings and its Swiss regional business. Implenia’s sectorial unit Infrastructure focuses on cross-national tunnelling as well as foundation engineering. Internationally, the Group operates through the Scandinavia and Germany & Austria regional units. The operational areas are supported by central Group functions.

Implenia press contact:

Philipp Bircher

Head of Communications Group

Tel.: +41 58 474 74 77

philipp.bircher@implenia.com

Implenia, Switzerland's leading construction and construction services company, also has a strong position in the German, Austrian and Scandinavian infrastructure markets. Established in 2006, Implenia can look back on around 150 years of construction tradition. It brings together the expertise of its highly skilled sectoral and regional units under the single roof of a company active throughout Europe. With its integrated business model and specialists operating in all areas of construction, the Group can manage a building project through its entire lifecycle and deliver work that is economical, integrated and customer-centric. The focus is on striking a sustainable balance between financial success and social and environmental responsibility.

Implenia has its headquarters in Dietlikon near Zurich and employs approximately 8500 people around Europe. In 2014 it posted pro forma revenue (including the former Bilfinger Construction GmbH) of around CHF 3.6 billion. The company is listed on the SIX Swiss Exchange (IMPN, CH0023868554). For more information, please visit www.implenia.com.