



PRESS RELEASE

Implenia commissioned to build a new urban district in Yverdon for around CHF 70 million – As total contractor, Implenia will erect five buildings by the middle of 2016 for residential, commercial and office use, plus parkland | Further vindication of Implenia's "One company" strategy

Dietlikon, 28 April 2014 – A new high-density urban district is being built on a 13,630 m² site between Avenue Haldimand, Rue Saint-Roch and Rue de l'industrie in Yverdon. The development plans produced by architects Thibaud-Zingg to repurpose the existing site were approved in October 2013. Implenia planned the project together with the project manager, and as total contractor acting for several principals it is now starting work on the development, which includes five separate buildings. These will house 205 apartments and 86 student apartments as well as offices and commercial space. The plans also include a park, which together with the architectural quality of the surrounding buildings will contribute to the attractions of the new district. Yverdon's authorities granted the building licence for the CHF 70 million project last week, so that Implenia can start work in May 2014. With construction scheduled to last two and a half years, the first occupants will be able to move in around the middle of 2016. Building construction specialists from Implenia's Buildings Business Unit will be working closely with their colleagues from Tunnelling & Civil Engineering on the project. The Tunnelling and Civil Engineering experts will be applying their technical skills to the foundation work and the underground car park. The contract award vindicates the "One company" strategy adopted by Implenia Group.

Implenia press contact:

Philipp Bircher

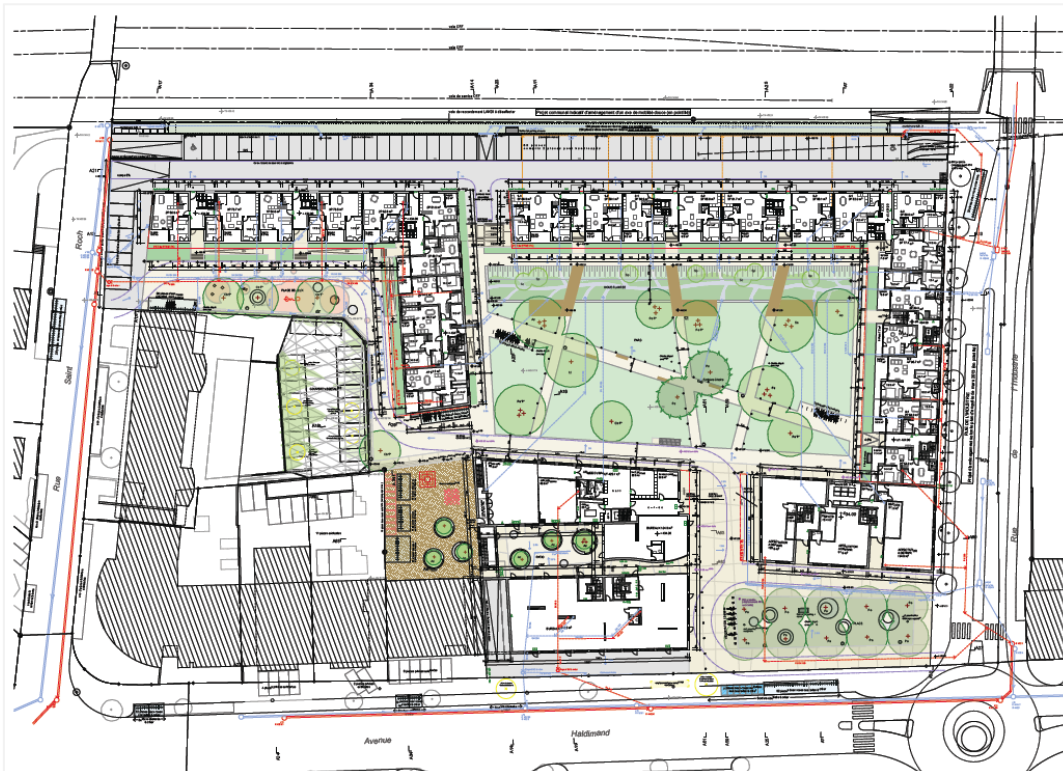
Head of Communication

Tel.: +41 58 474 74 77

philipp.bircher@implenia.com



A new district is being created at a central location in Yverdon just 500 meters from the railway station as part of the repurposing of the existing "St-Roch-Haldimand-Industrie" site.



By mid-2016 Implenia will have constructed five buildings housing 205 apartments (including 142 owner-occupied homes), 86 student apartments and space for offices and commercial. A central park will provide a place to meet and relax.

Implenia is Switzerland's leading construction and construction services company. Formed in 2006 from the merger between Zschokke and Batigroup, Implenia can look back on around 150 years of history in the construction industry. The company brings the expertise of its highly skilled Modernisation & Development, Buildings, and Tunnelling & Civil Engineering Sectors, and its Switzerland and Norway Regions under the single roof of a nationally and internationally active company. With its integrated business model and specialists operating in all its business units, Implenia can manage a building project through its entire lifecycle and deliver work that is economical, integrated and customer-centric. The focus is on striking a sustainable balance between financial success and social and environmental responsibility.

Implenia, with its headquarters in Dietlikon near Zurich, employs more than 6600 people and posted turnover of more than CHF 3.1 billion in 2013. The company is listed on the SIX Swiss Exchange (IMPN, CH0023868554). For further information please visit www.implenia.com.