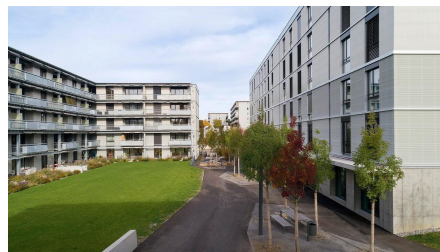
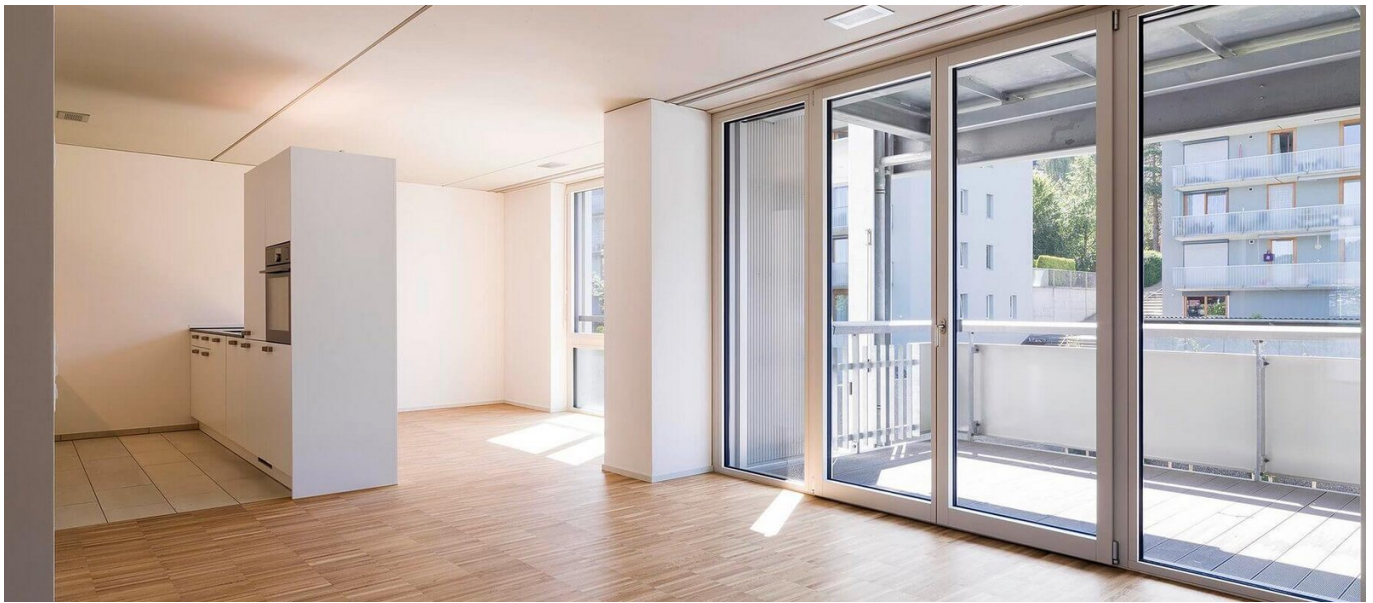


WÜB Bernhardswies, Bernhardswiesstr. 28-34, Hechtackerstr. 12-12g, 14-14b



SHORT DESCRIPTION

New construction of four apartment buildings with 147 rental apartments and commercial premises as well as a kindergarten.

SUSTAINABILITY

- The buildings are constructed and certified according to the Minergie standard
- District heating connection
- Central location, good public transport connections
- Ecologically valuable living spaces in traffic-free courtyards.

FACTS

Location

Hechtackerstrasse 12 , St. Gallen , Switzerland

Status	completed
Construction volume (value of our services)	40.5 M CHF
Start of construction	August 2017
Completion	May 2020
Building owner	BVK Personalvorsorge des Kantons Zürich, CH-8090 Zürich
Architect	Atelier Strut AG, CH-8400 Winterthur
Construction management	Ausführung als Totalunternehmerin Implenia Schweiz AG, Buildings CH-9014 St. Gallen
Build volume	91883 m ²
Living area	28557 m ²
Number of upper floors	6
Construction management	Ausführung als Totalunternehmerin Implenia Schweiz AG, Buildings CH-9014 St. Gallen

SUSTAINABILITY

MINERGIE[®] Minergie-Standard

SERVICES

New constructions



<https://implenia.com/en/references/detail/ref/wueb-bernhardswies-bernhardswiesstr-28-34-hechtackerstr-12-12g-14-14b/>

Creation: 20.01.2026 02:22