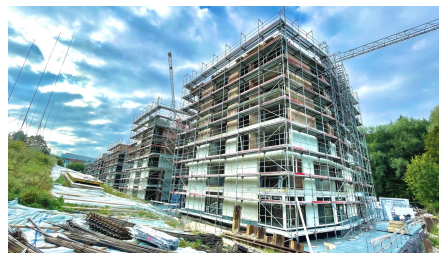


Worblaufen Hammerwerk residential development



SHORT DESCRIPTION

New residential development on the banks of the River Aare on the former Hammerwerke site in the municipality of Ittigen / Worblaufen (BE).

THE PROJECT

The 77 condominiums are divided into 5 buildings, each with 7 storeys. The surroundings will be designed according to the character of the shore with walkways, plants and a playground.

The buildings are connected to each other on the ground floor by a parking garage with 122 parking spaces. All flats can be reached without steps from the parking garage.

CHALLENGES

The site is located directly on the Aare, which makes excavation and dewatering very challenging. The narrow and only access via Schmiedeweg led to various conflicts with deliveries. The parking garage was built directly onto the adjacent neighbouring building, which was solved cleanly using the latest construction techniques.

According to the building ground geology, measures such as material replacement and groundwater sealing had to be carried out. Various relocations of the existing old service lines and the construction of a large retention basin for the meteoric water.

SUSTAINABILITY

The residential building was constructed according to the Minergie standard (not certified). The building owner decided to use district heating for the residential building. The e-mobility stations in the parking garage promote the efficient use of solar energy.

FACTS

Location	Worblaufen , Switzerland
Status	completed
Construction volume (value of our services)	31.4 M CHF
Start of construction	May 2020
Completion	June 2022
Building owner	Halter AG, Developments Europaplatz 1A 3008 Bern
Architect	Büro B Architekten AG Schwanengasse 10 3011 Bern
Build volume	50020 m ²
Commercial space	10500 m ²
Number of upper floors	7

SERVICES

New constructions



<https://implenia.com/en/references/detail/ref/worblaufen-hammerwerk-residential-development/>

Creation: 19.04.2026 16:57