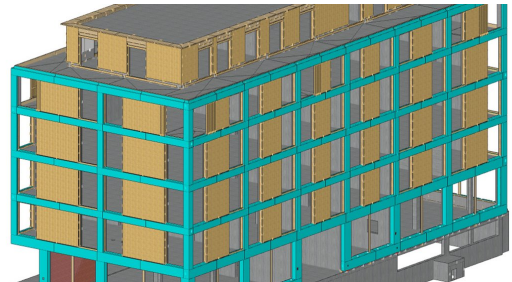


Winterthur Town Village



SHORT DESCRIPTION

A multi-use, multi-faceted development with a community focus.

THE PROJECT

Town Village includes a total of 61 apartments, with 60% of the units reserved for elderly occupants. The remaining apartments include single-occupant and family-sized units, as well as a residential facility for people living with developmental disabilities.

The Quellenhof Foundation program at Town Village will run training facilities and workshops for people living with developmental disabilities. The apartments at Town Village include modular spaces that can be readily converted to provide varying degrees of assisted living.

SERVICES IN DETAIL

- Narrow tolerances for façade elements

- Wooden exterior walls
- Wooden façade
- Alucobond façade

CHALLENGES

- Scheduling
- Logistics
- Assembly of external walls
- Ensuring the precision of the façade elements

FURTHER INFORMATION

Execution	04.2018 - 09.2019
Use	Residential, commercial
Number of houses	Three residential blocks
Wall elements	2,500 m ²
Wooden façade	1,500 m ²
Alucobond façade	1,800 m ²

FACTS

Location	Town Village, Winterthur , Switzerland
Status	completed
Construction volume (value of our services)	2.2 M CHF
Start of construction	April 2018
Completion	September 2019
Building owner	Quellenhof-Stiftung
Architect	eins Gruppe
Construction management	Marti AG Bauunternehmung
Planning	Josef Kolb AG
Construction management	Marti AG Bauunternehmung

SERVICES

Timber construction

Modular construction



<https://implenia.com/en/references/detail/ref/winterthur-town-village/>

Creation: 19.04.2026 22:59