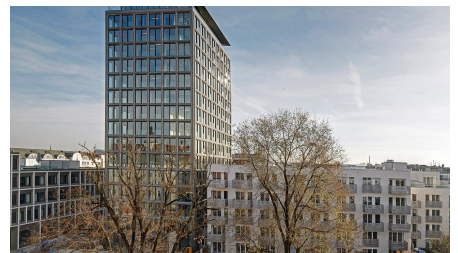
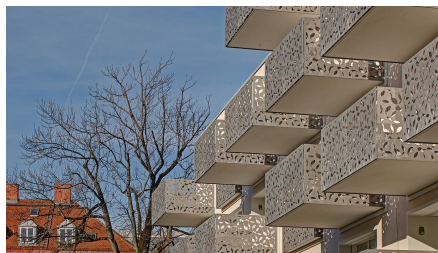


The Seven



SHORT DESCRIPTION

With more than 100 high-class apartments and office spaces, the residential and commercial complex "The Seven" is bringing a polished new look to Munich's popular Gärtnerplatz district.

THE PROJECT

For "The Seven", Implenia's Buildings division converted the 56-metre-high filtering tower of the former thermal power station into owner-occupied flats, an office building, a residential building and an underground parking garage with almost 500 parking spaces. The only clue that remains as to the building's former function as a machine tower is its smokestacks, with large swathes of glass and an element façade bringing something new to this historical construction.

The newly designed residential building has five storeys and an atrium. It contains 50 apartments with varying designs and sizes ranging from 70 to 120 square metres. These apartments form a U-shape around an interior space designed as a water garden surrounded by colonnades, which in turn provide access to the apartments. To its exterior, the complex is surrounded by gardens.

FACTS

Location	Müllerstraße 3, Munich , Germany
Status	completed
Construction volume (value of our services)	70 M EUR
Start of construction	January 2011
Completion	June 2013
Contracting entity	Projektgesellschaft aiP Gärtnerplatz GmbH & Co. KG
Architect	Léon Wohlhage Wernik Gesellschaft von Architekten mbH, bis Lph 4
Number of upper floors	16
Number of basement floors	3
Number of flats	100
Number of parking spaces	400

SERVICES

Sanieren, Umbauen und Revitalisieren

Beraten und Planen

Schlüsselfertiges Bauen

Real Estate

Hochbau (Deutschland)



<https://implenia.com/en/references/detail/ref/the-seven-1/>

Creation: 16.06.2026 08:33