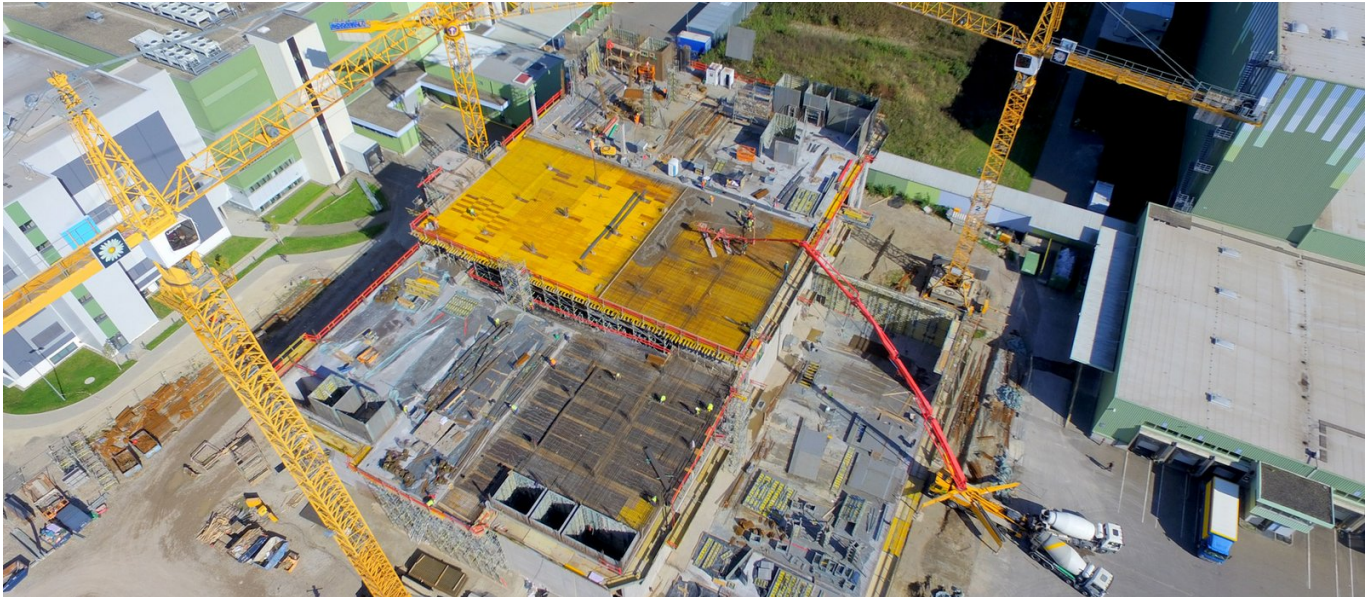


## Takeda Impfstofffabrik Singen



### SHORT DESCRIPTION

Takeda W35 + W36 vaccine manufacturing facility in Singen

### THE PROJECT

A firm with a long history, Takeda Pharmaceutical Company Ltd is a research-based pharmaceutical company with operations worldwide. Takeda has invested some 120 million euros into production facilities in Singen for vaccine to protect against the dengue virus.

### SERVICES IN DETAIL

Implenia built the basic structure, which contained some 90,000 square metres of enclosed space divided up into a two-storey and a five-storey building.

### CHALLENGES

- Creation of different storey heights through successive adaptation of the formwork
- High level of reinforcement in the shaft corner regions

### SUSTAINABILITY

High demands relating to occupational safety – no major occupational accidents

### FACTS

---

<b>Location</b>	Robert-Bosch-Straße 8, Singen , Germany
<b>Status</b>	completed
<b>Construction volume (value of our services)</b>	10.5 M EUR
<b>Start of construction</b>	February 2017
<b>Completion</b>	January 2018
<b>Contracting entity</b>	Takeda Singen Real Estate GmbH & Co. KG

## SERVICES

---

Industrial construction

Construction logistics



---

<https://implenia.com/en/references/detail/ref/takeda-vaccine-manufacturing-facility-in-singen/>

Creation: 15.04.2026 14:39