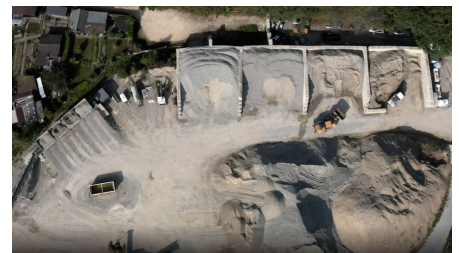
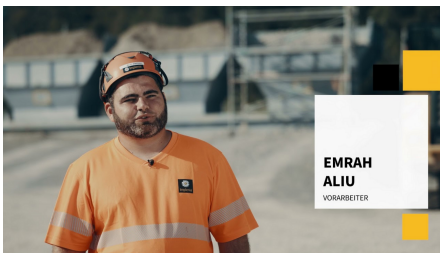


## Südwestumfahrung Brugg



### SHORT DESCRIPTION

The new bypass will connect the lower Aare valley with the A1 and A3 motorways and provide access to Brugg/Windisch.

### THE PROJECT

The Brugg south-west bypass project consists of three sub-projects, the new construction of the south branch of the K128, the new construction of the west branch of the K128 and the new construction of the connecting link K401. This new bypass will connect the lower Aare valley with the A1 and A3 motorways and provide access to Brugg/Windisch. Within this project, a complete two-lane road construction with two concrete roundabouts including various works and drainage lines was realised. Various concrete retaining walls with noise protection elements, bridge renovations and new bridge constructions, renewal and renovation of level crossings and compensation measures round off the complex overall structure.

### SERVICES IN DETAIL

- Utility cable blocks VT: 3'300 m
- Service line blocks EW/water/gas: 5'000 m

- Sewerage/Drainage: 3'250 m various sizes and combinations
- Stone baskets: 1'250 pcs.
- Retaining walls: 1'365 m
- Noise protection elements: 240 pcs
- In-situ concrete: 8'300 m<sup>3</sup>
- Nail wall: 1'250 m<sup>2</sup>
- Anchors: 220 pcs
- Excavation: 250'000 m<sup>3</sup>
- Pavement demolition: 25'000 m<sup>2</sup>
- Backfill/fill: 60'000 m<sup>3</sup>
- Foundation layers: 40'000 m<sup>3</sup>
- Asphalt: 21'000 tons
- Edge finishes: 2'000 m
- Concrete pavements: 2'850 m<sup>2</sup>

## CHALLENGES

The biggest challenge was to shorten the construction time by one year during the course of the project, which was an enormous coordination effort and feat of strength. Thanks to project optimisations, bundling and cooperation of various departments and specialities from the Civil sector, we were able to present our professional competence and clout impressively and successfully.

Thanks to Circular Economy, we were also able to demonstrate how construction and resource conservation can be brought into harmony.

## SUSTAINABILITY

- Circular Economy

## FURTHER INFORMATION

[To the News](#)

## FACTS

<b>Location</b>	Brugg/Windisch/Hausen , Switzerland
<b>Status</b>	completed
<b>Construction volume (value of our services)</b>	33 M CHF
<b>Start of construction</b>	April 2019
<b>Completion</b>	October 2021
<b>Building owner</b>	Departement Bau, Verkehr und Umwelt
<b>Project management</b>	Alexander Stritt, Klaus Theismann
<b>Construction management</b>	Ingenieurgesellschaft SWU-B-W Eichenberger AG, Gerber + Partner AG
<b>Construction management</b>	Ingenieurgesellschaft SWU-B-W Eichenberger AG, Gerber + Partner AG

## SERVICES

---

Road construction

Earthworks

Stabilisation

Construction of drains and service lines

Concrete surfaces: roads

Road and surface construction

Urban transport infrastructure



---

<https://implenia.com/en/references/detail/ref/suedwestumfahrung-brugg/>

Creation: 13.04.2026 04:05