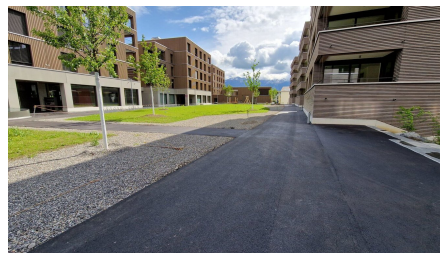


Steffisburg, Gschwendareal



SHORT DESCRIPTION

The project included pavement paving as part of the environmental works of the Gschwendareal.

THE PROJECT

The pavement installations and the associated grading work for the surroundings of the entire site were carried out in several stages. In some places, the material to be placed had to be transported in between and placed by hand, as the load class of individual components prevented the use of heavy paving machines.

SERVICES IN DETAIL

- Road construction
- Pavement construction

CHALLENGES

- Accessibility for surfacing work only possible with light machinery or by hand

FURTHER INFORMATION

Execution as sole contractor

Implenia Switzerland Ltd, Construction Switzerland CH-3000 Berne 14

FACTS

Location	Steffisburg , Switzerland
Status	completed
Construction volume (value of our services)	120,000 CHF
Start of construction	November 2022
Completion	May 2023
Building owner	Stähli Gartengestaltung GmbH
General management	HRS Real Estate AG

SERVICES

Road construction

Road and surface construction



<https://implenia.com/en/references/detail/ref/steffisburg-gschwendareal/>

Creation: 12.06.2026 12:13