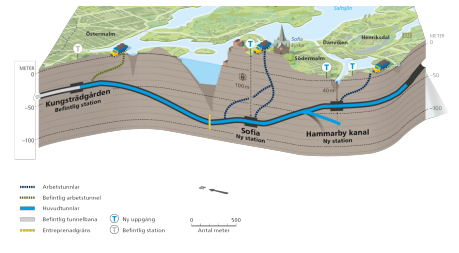


Sofia



SHORT DESCRIPTION

Sofia metro station is part of the extension of the blue line towards Gullmarsplan and Nacka

THE PROJECT

Sofia metro station is part of the extension of the Blue Line towards Gullmarsplan and Nacka, starting from the current Kungsträdgården metro station. As the civil engineering contractor, Implenia will construct an approximately 150-meter-long station area, two track tunnels and a supply tunnel in rock. The tunnels extend from Sofia station north to the lowest point of the line under Lake Saltsjön, a distance of around 600 meters. The tunnels to the south extend for about 1400 meters.

FACTS

Location	Stockholm , Sweden
Status	Under construction
Construction volume	120 M EUR

(value of our services)

Start of construction August 2021

Completion March 2027

Building owner SL Nya Tunnelbanan AB

General management Gründungsarbeiten, Planung, Betonarbeiten, Tunnelbau

SERVICES

Tunnelling

Infrastructure



<https://implenia.com/en/references/detail/ref/sofia/>

Creation: 14.12.2025 03:35