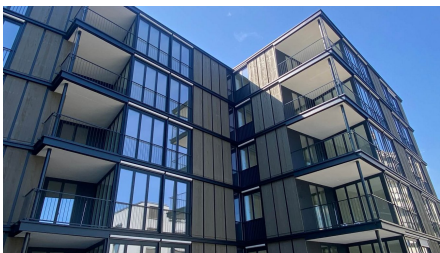
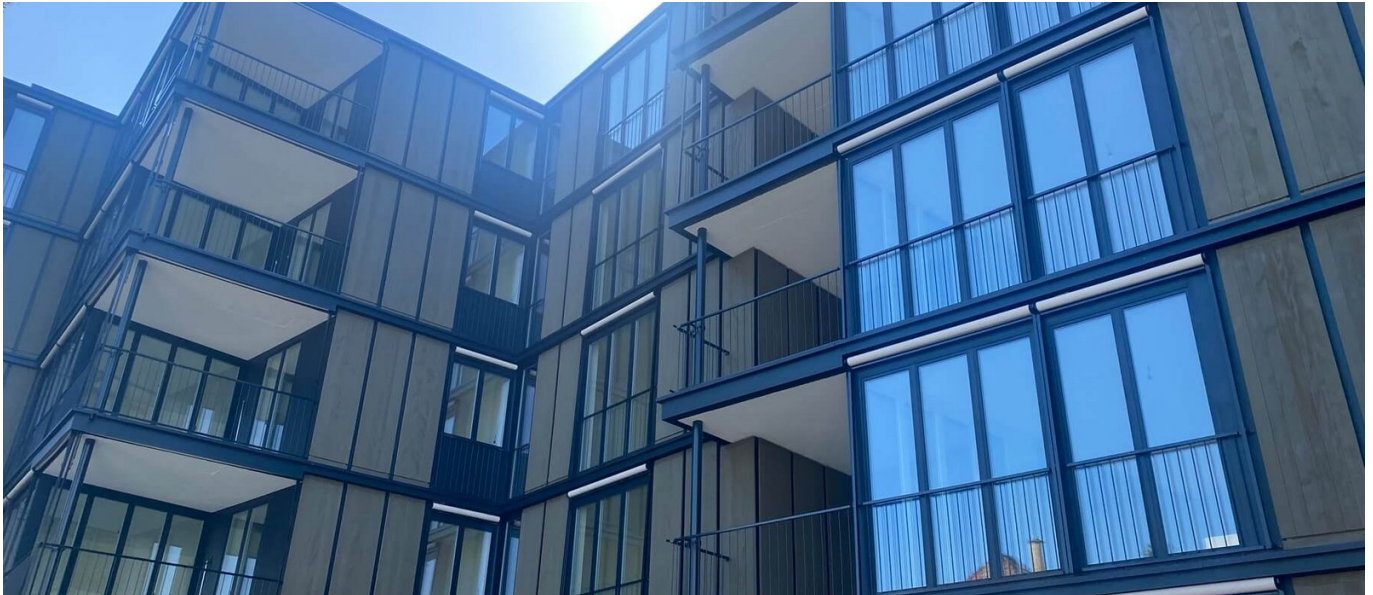


Ersatzneubau Riedacker



SHORT DESCRIPTION

For the new Riedacker replacement building, timber construction elements were mounted on a solid steel and concrete structure.

THE PROJECT

As the windows were planned from floor to ceiling, we planned the elements across several storeys. In some cases, elements were produced and installed across 3 storeys.

The elements were supplemented on the inside with a facing shell. The façade consists of a combination of wooden panels as an element with groove and comb, pressure-impregnated and oiled silver fir boards and separating elements made of anodized aluminium sheet.

CHALLENGES

The numerous and sometimes complicated components of the aluminum façade posed a particular challenge during planning and installation.

Thanks to the digital planning and installation by our timber construction experts, an impressive façade was handed over.

SUSTAINABILITY

Most of the material comes from nearby regions and from sustainable production.

FURTHER INFORMATION

[Website](#)

FACTS

Location	Altwiesenstrasse 180, Zürich , Switzerland
Status	completed
Construction volume (value of our services)	2.4 M CHF
Start of construction	June 2022
Completion	June 2023
Building owner	Baugenossenschaft Glattal Zürich, Kronwiesenstrasse 95, CH-8051 Zürich
Architect	BS-EMI Architektenpartner AG, Weststrasse 70, CH-8003 Zürich
Planning	BS-EMI Architektenpartner AG, Weststrasse 70, CH-8003 Zürich
Civil engineer	Pirmin Jung Schweiz AG, Centralstrasse 34, CH-6210 Sursee
Timber construction	Elementfläche 2'400 m ² Fassadenfläche 2'600 m ²

SERVICES

Modular construction



<https://implenia.com/en/references/detail/ref/riedacker/>

Creation: 06.07.2026 03:31