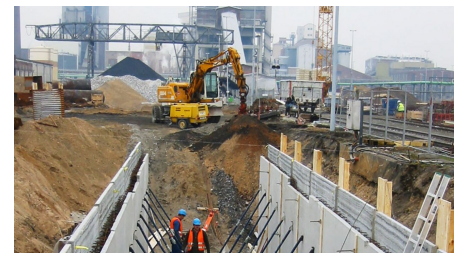


Rheinberg Industrial Park



SHORT DESCRIPTION

Construction of new limestone warehouse in just six months.

THE PROJECT

- Construction period: 6 months
- 1400 m³ reinforced concrete
- 300 m³ precast reinforced concrete elements
- Transport tunnel: 120 m long, 3.0 m x 3.0 m cross-section
- 280 t steel construction
- Underground loading station with low-level bunker
- Inbound transportation of limestone or coal by train or truck
- Intermediate storage facility with storage volume of approx, 10,000 m³
- Material transportation via supply tunnels and overground via conveyor belts

FACTS

Location	Rheinberg , Germany
Status	completed
Construction volume (value of our services)	2 M EUR
Start of construction	January 2004

SERVICES

Tesch

Industrial construction



<https://implenia.com/en/references/detail/ref/rheinberg-industrial-park/>

Creation: 01.04.2026 21:51