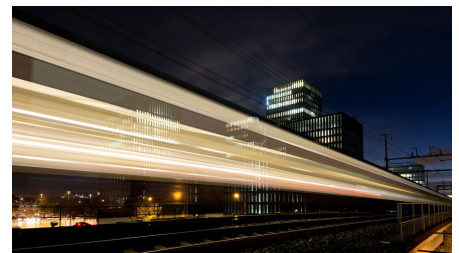
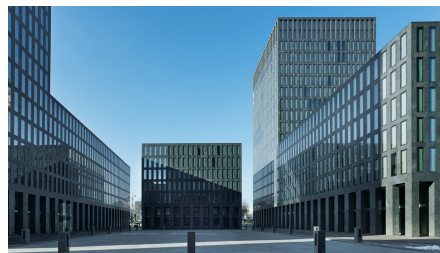
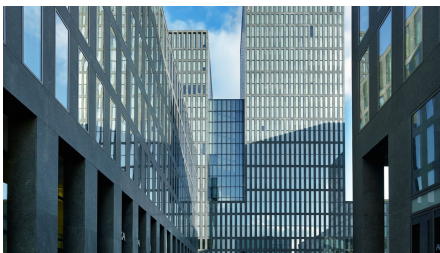


## Hochhaus-Ensemble Quadro



### SHORT DESCRIPTION

Implenia has developed and executed an ensemble of four high-rise buildings of different heights in Zurich North.

### THE PROJECT

The entire complex was developed together with the joint venture between architects Atelier ww and Max Dudler. The high-rise ensemble, which is built on a square grid, is unique with its uniform architecture and use of material.

Energy efficiency, a high degree of flexibility and the use of high-quality materials deliver optimum value for customers. The central location in northern Zurich and the good public transport and road links underpin the development's function as a new hub for the Leutschenpark district.

### SERVICES IN DETAIL

- Project development
- Construction of replacement properties
- Investment properties

- Developing plots to increase their value
- Turnkey solutions

## FURTHER INFORMATION

### Execution:

- 2000-2004 phase
- 2009-2012 phase
- 2010-2013 phase

## FACTS

<b>Location</b>	Hagenholzstrasse , Zürich , Switzerland
<b>Status</b>	completed
<b>Construction volume (value of our services)</b>	500 M CHF
<b>Start of construction</b>	January 2000
<b>Completion</b>	December 2013
<b>Contracting entity</b>	BVK Personalvorsorge des Kantons Zürich/Winterthur Leben
<b>Architect</b>	ARGE Atelier WWI/Max Dudler
<b>Commercial space</b>	75000 m <sup>2</sup>
<b>Number of upper floors</b>	28
<b>Number of basement floors</b>	4
<b>Number of parking spaces</b>	522

## SUSTAINABILITY

**MINERGIE®**

Minergie-Standard

## SERVICES

---

Site & project development

Real Estate Development



---

<https://implenia.com/en/references/detail/ref/quadro-high-rise-project/>

Creation: 03.03.2026 16:37