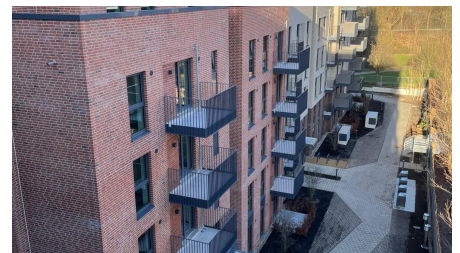


## Perlhof



### SHORT DESCRIPTION

Implenia has once again built a turnkey residential complex on the former Union site in the west of Hamburg

### THE PROJECT

The development of the former Union site is currently the largest new construction project in Hamburg. With the architecture of the new quarter, the tradition of the Altona quarters is taken up and interpreted in a modern way.

### SERVICES IN DETAIL

As a follow-up to a project successfully completed in 2016 in the west of Hamburg, Implenia has once again been commissioned by the client to build a new residential complex. In Hamburg's Baurstrasse, adjacent to the Othmarscher Höfe development, a new turnkey residential complex was built with around 160 residential units, underground parking and outdoor facilities to the designs of Schenk und Waiblinger Architekten, Hamburg. A total of around 67,000 cubic meters of enclosed space was created here, partly as subsidized housing in the KfW Efficiency House 55 energy standard.

### FACTS

<b>Location</b>	Jürgen-Töpfer-Straße , Hamburg , Germany
<b>Status</b>	completed
<b>Construction volume (value of our services)</b>	30 M EUR
<b>Start of construction</b>	April 2019
<b>Completion</b>	December 2020
<b>Usage</b>	Wohnen
<b>Building owner</b>	Othmarscher Höfe Baurstraße GmbH & Co. KG
<b>Architect</b>	Schenk und Waiblinger Architekten, Hamburg
<b>Build volume</b>	21200 m <sup>2</sup>
<b>Number of upper floors</b>	7
<b>Number of flats</b>	160

## SERVICES

---

Schlüsselfertiges Bauen

Hochbau (Deutschland)



---

<https://impenia.com/en/references/detail/ref/perlhof/>

Creation: 20.06.2026 10:17