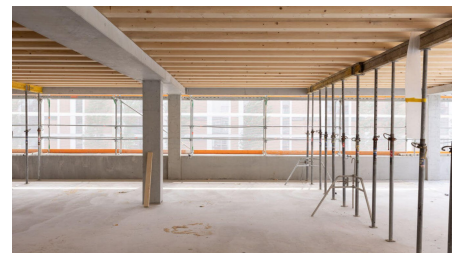
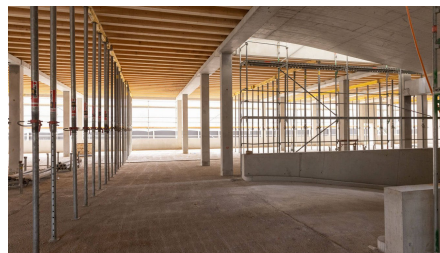
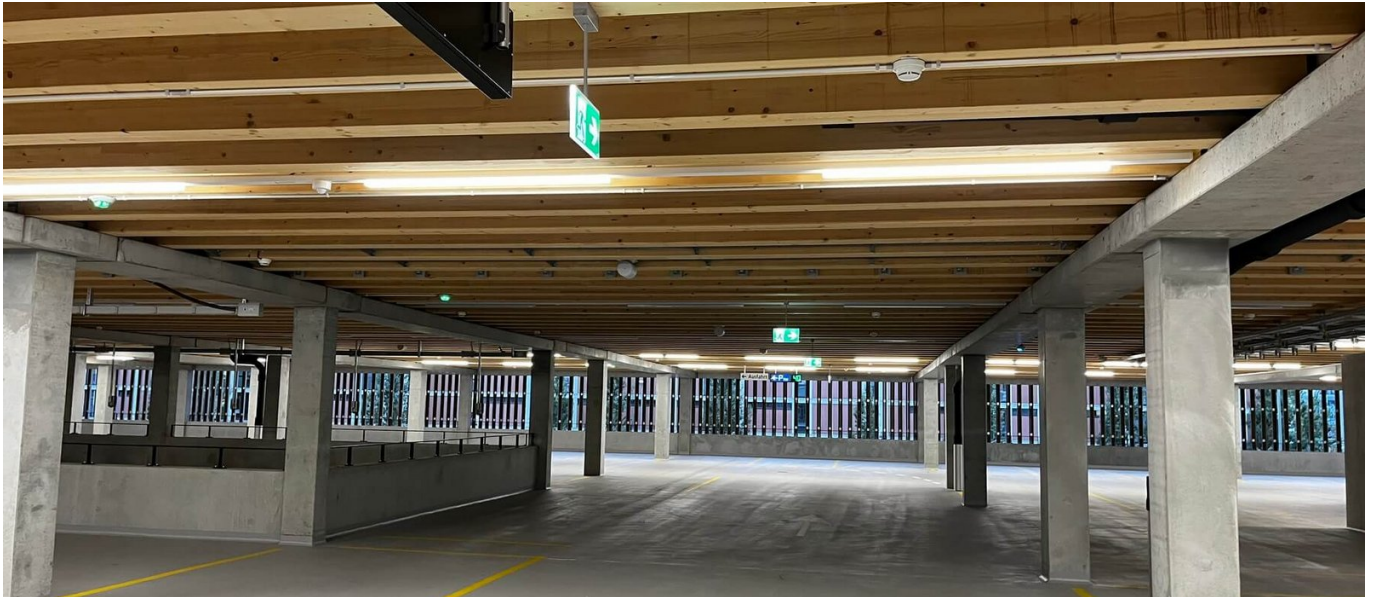


## Parkhaus Forschungscampus EMPA



### SHORT DESCRIPTION

A new campus is being built on the Empa-Eawag site in Dübendorf, consisting of a laboratory and a multifunctional building with a parking garage.

### THE PROJECT

Three full storeys, including ceilings and roof in hybrid construction, beam layer planked with wood-based panels and concrete. Unfinished interior fit-out of the commercial premises.

### SERVICES IN DETAIL

- Assembly construction in wood

### CHALLENGES

- First parking garage with wood-concrete hybrid ceiling

## SUSTAINABILITY

- Minergie-P-Eco certification is required

## FURTHER INFORMATION

[Empa Website](#)

## FACTS

|                                                    |                                               |
|----------------------------------------------------|-----------------------------------------------|
| <b>Location</b>                                    | Ueberlandstrasse 129, Dübendorf , Switzerland |
| <b>Status</b>                                      | completed                                     |
| <b>Construction volume (value of our services)</b> | 1.77 M CHF                                    |
| <b>Start of construction</b>                       | March 2022                                    |
| <b>Completion</b>                                  | May 2023                                      |
| <b>Building owner</b>                              | Empa Dübendorf                                |
| <b>Architect</b>                                   | SAM Architekten AG Zürich                     |
| <b>Civil engineer</b>                              | WaltGalmarini AG Zürich                       |

## SUSTAINABILITY

**MINERGIE P-ECO**

Minergie P-ECO

## SERVICES

Timber construction

Modular construction



<https://impenia.com/en/references/detail/ref/parkhaus-empa/>

Creation: 15.04.2026 11:25