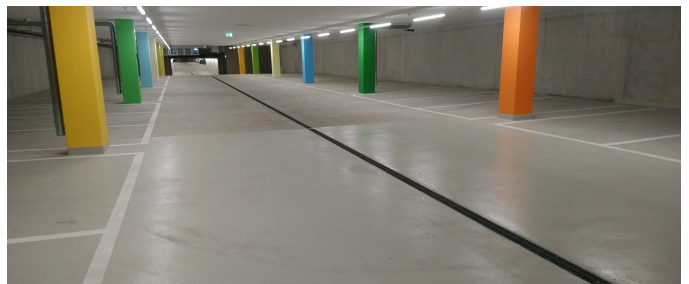


## Neubau Wohnüberbauung Feldbreite Baufeld D2



### SHORT DESCRIPTION

Residential development with 151 apartments and commercial space on the ground floor, underground parking with 131 parking spaces.

### CHALLENGES

- Logistics site development
- Special civil engineering

### SUSTAINABILITY

- Minergie standard
- District heating connection

### FACTS

---

<b>Location</b>	Feldbreiteweg 2, Emmen , Switzerland
<b>Status</b>	completed
<b>Construction volume (value of our services)</b>	40 M CHF
<b>Start of construction</b>	September 2014
<b>Completion</b>	October 2016
<b>Building owner</b>	P.ARC Development AG CH-6004 Luzern
<b>Contracting entity</b>	Ausführung als Totalunternehmerin Implenia Schweiz AG, Buildings CH-6003 Luzern
<b>Architect</b>	GWJ Architekten AG CH-3000 Bern
<b>Planning</b>	Wismer + Partner AG CH-6343 Rotkreuz
<b>Build volume</b>	71634 m <sup>2</sup>
<b>Living area</b>	22748 m <sup>2</sup>
<b>Number of upper floors</b>	4

## SUSTAINABILITY

**MINERGIE**<sup>®</sup> Minergie-Standard

## SERVICES

New constructions



<https://implenia.com/en/references/detail/ref/neubau-wohneuberbauung-feldbreite-baufeld-d2/>

Creation: 14.04.2026 05:25