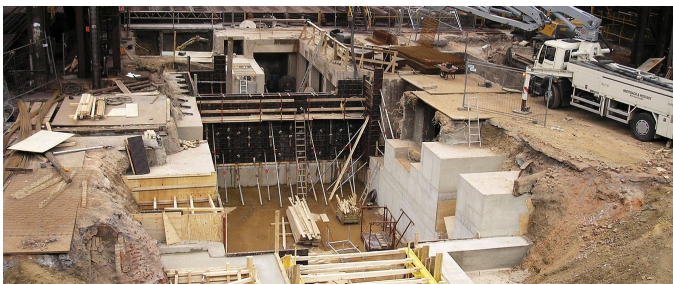


Mülheim an der Ruhr



SHORT DESCRIPTION

Foundation works for cold plate leveller – working during ongoing production.

THE PROJECT

- Construction period: 5 months
- 2,000 m³ reinforced concrete
- 1,000 m³ demolition work
- 2,100 m³ excavation work
- Shoring with sheet piles
- Working during ongoing production

FACTS

Location Mülheim an der Ruhr , Germany

Status	completed
Construction volume (value of our services)	500,000 EUR
Start of construction	January 2008

SERVICES

Tesch

Industrial construction



<https://implenia.com/en/references/detail/ref/muelheim-an-der-ruhr-1/>

Creation: 25.04.2026 20:02