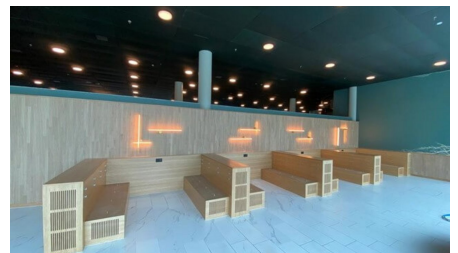
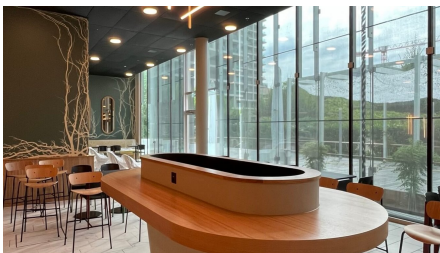


Leonardo Zürich



SHORT DESCRIPTION

In the New Leonardo office building in Zurich Oerlikon, the joinery was commissioned to carry out the interior fit-out of the new catering area.

THE PROJECT

The carpentry work included wall cladding in acoustic panels, a staircase construction, banisters, various seating niches and benches, a door, metal frames and bar tables with oak flower boxes and mirrors with oak frames. Outside, we were able to restore chairs and railings.

CHALLENGES

- Detailed planning and production of the bar tables with integrated oak flower box.
- Interfaces carpentry and ventilation

FURTHER INFORMATION

[Website](#)

FACTS

Location	Thurgauerstrasse 80, Zürich , Switzerland
Status	completed
Construction volume (value of our services)	267,000 CHF
Start of construction	February 2023
Completion	May 2023
Building owner	Credit Suisse AG, Uetlibergstrasse 231, CH-8045 Zürich
Architect	Architekturglarner GmbH CH-8008 Zürich

SUSTAINABILITY

MINERGIE® Minergie-Standard

SERVICES

Joinery



<https://implenia.com/en/references/detail/ref/leonardo-zuerich/>

Creation: 19.04.2026 15:16