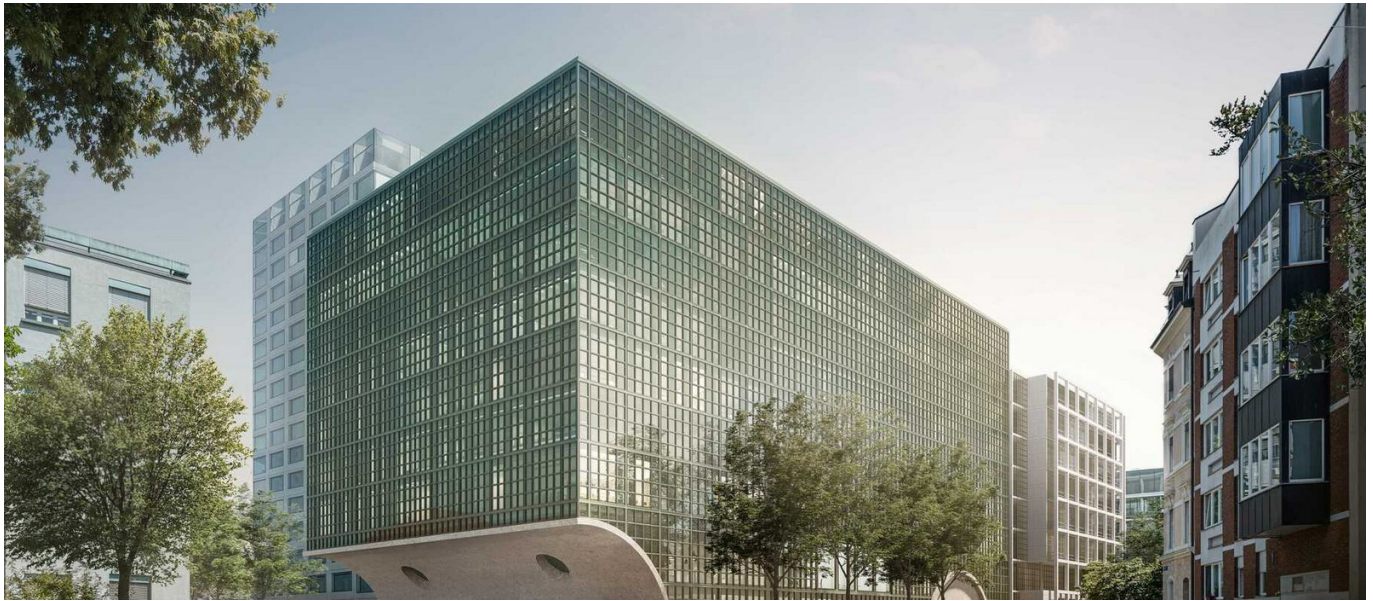


Laborneubau Departement Biomedizin DBM Universität Basel



SHORT DESCRIPTION

The Department of Biomedicine (DBM) of the University of Basel combines the experimental laboratory research of the medical faculty in the latest new building of the Life Sciences Campus on the Schällemätteli site in Basel. This ideally combines research, teaching and applied medicine at one location.

THE PROJECT

Implenia was awarded the contract as general contractor on the basis of its many years of experience and proven expertise from similar laboratory and healthcare buildings, as well as a convincing team of experts. In addition, as a leading Swiss construction and real estate services provider, Implenia can supply the main trades such as civil engineering and master builder from a single source.

The contract is worth over CHF 250 million and includes execution planning, realization and commissioning.

SERVICES IN DETAIL

On a floor area of approx. 37,000^m² distributed over three basement floors, one first floor and eight upper floors, rooms for laboratory, office and seminar use are being created. The building is being planned in accordance with the Minergie standard. In addition to high technical and hygienic requirements, the flexibility of the building is also of great importance for research. BIM (Building Information Modeling) methods are being used in the planning and realization of the new laboratory building, for example integral planning with models of all specialist disciplines, model coordination and verification using digital tools, integration of user requirements using a room book or virtual reality (VR). In addition,

digital Lean Construction (e.g. LCM Digital), service packages are staged, dependencies are shown, the complexity of the work steps is reduced, and quality and schedule control are carried out.

FURTHER INFORMATION

Picture: ©Burckhardt+Partner

FACTS

Location	Klingelbergstrasse 70, Basel , Switzerland
Status	Under construction
Construction volume (value of our services)	250 M CHF
Start of construction	September 2023
Completion	September 2029

SERVICES

New constructions

Health and laboratory buildings



<https://impenia.com/en/references/detail/ref/laborneubau-departement-biomedizin-dbm-universitaet-basel/>

Creation: 18.04.2026 18:25