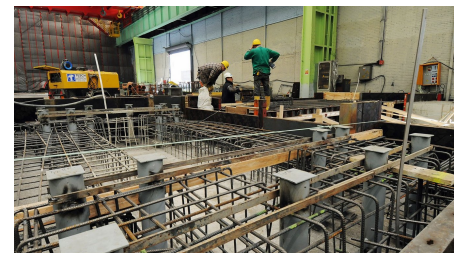


Krefeld



SHORT DESCRIPTION

Conversion of the TKN segment workshop at the Krefeld plant.

THE PROJECT

- Construction period: 4 months
- 1,200 m³ reinforced concrete
- 160 t steel construction
- 800 m² fire safety wall
- Extensive earthworks and demolition work
- Construction work in existing buildings
- Precise installation of steel elements, approx. 35 t, to +/- 5 mm
- High requirements in terms of concrete quality
- Finishing work e.g. heating/cooling/roof and façade carried out by Implenia Tesch and its partners
- Execution planning by Implenia Tesch

FACTS

Location Krefeld , Germany

Status completed

**Construction volume
(value of our services)** 1.9 M EUR

Start of construction January 2008

SERVICES

Tesch

Industrial construction



<https://implenia.com/en/references/detail/ref/krefeld-1/>

Creation: 31.03.2026 23:24