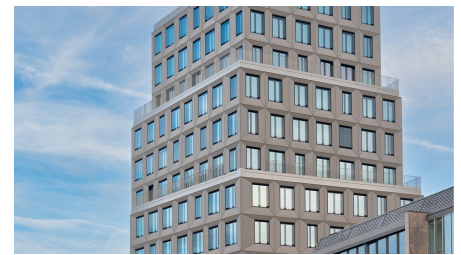
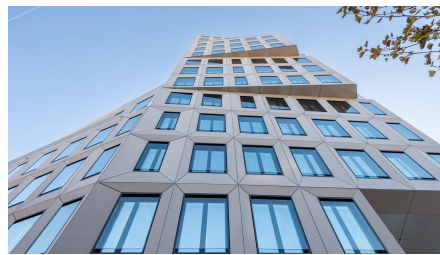
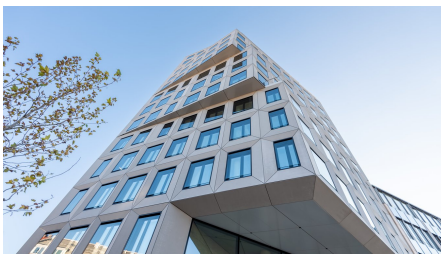


## Heimeran Westend offices



### SHORT DESCRIPTION

Implenia built the ultra-modern office complex to DGNB Gold standard on a turnkey basis according to the plans of the renowned Munich architectural firm OSA Ochs Schmidhuber.

### THE PROJECT

Directly on Heimeranplatz in Munich's Westend district, on the corner of Ridlerstrasse and Garmischer Strasse, a state-of-the-art office complex with around 15,000 sqm of gross floor area has been built to DGNB Gold standard. The appearance is characterized by a striking corner building, a high-rise with 14 storeys, which are offset from each other like cubes. The building is flanked by a five-storey perimeter block development.

In addition to the pricing, Implenia impressed the client with its partnership approach. Thanks to its broad expertise, the Group was also able to present the client with optimizing options in various discussions.

### SERVICES IN DETAIL

The tower's striking, soaring cubature creates extraordinary terraces and opens up spectacular views - across the rooftops

of Munich to the foothills of the Alps and the Zugspitze.

The roof terrace of around 800 sqm and the spacious inner courtyard of around 450 sqm offer plenty of space for rest and relaxation - surrounded by greenery.

In addition to the hotel's own underground parking garage, there are additional parking facilities in the immediate vicinity, including the Park & Ride parking garage at Heimeranplatz with attractive hourly and daily rates.

## SUSTAINABILITY

[DGNB Gold certified](#)

## FURTHER INFORMATION

[Project website](#)

## FACTS

<b>Location</b>	Ridlerstr. 39, München , Germany
<b>Status</b>	completed
<b>Construction volume (value of our services)</b>	40 M EUR
<b>Start of construction</b>	September 2020
<b>Completion</b>	November 2022
<b>Usage</b>	Büro, Einzelhandel
<b>Building owner</b>	Maxor 4 GmbH, Starnberg
<b>Contracting entity</b>	Ehret & Klein Real Estate Competence GmbH
<b>Architect</b>	OSA Ochs Schmidhuber Architekten, München
<b>Plot size</b>	8.23 m <sup>2</sup>
<b>Build volume</b>	16000 m <sup>2</sup>
<b>Commercial space</b>	12000 m <sup>2</sup>
<b>Number of upper floors</b>	14

## SUSTAINABILITY



Deutsche Gesellschaft für Nachhaltiges Bauen DGNB Gold

## SERVICES

---

Hochbau (Deutschland)

Beraten und Planen

Schlüsselfertiges Bauen



---

<https://implenia.com/en/references/detail/ref/heimeran-westend-bueros/>

Creation: 19.04.2026 09:42