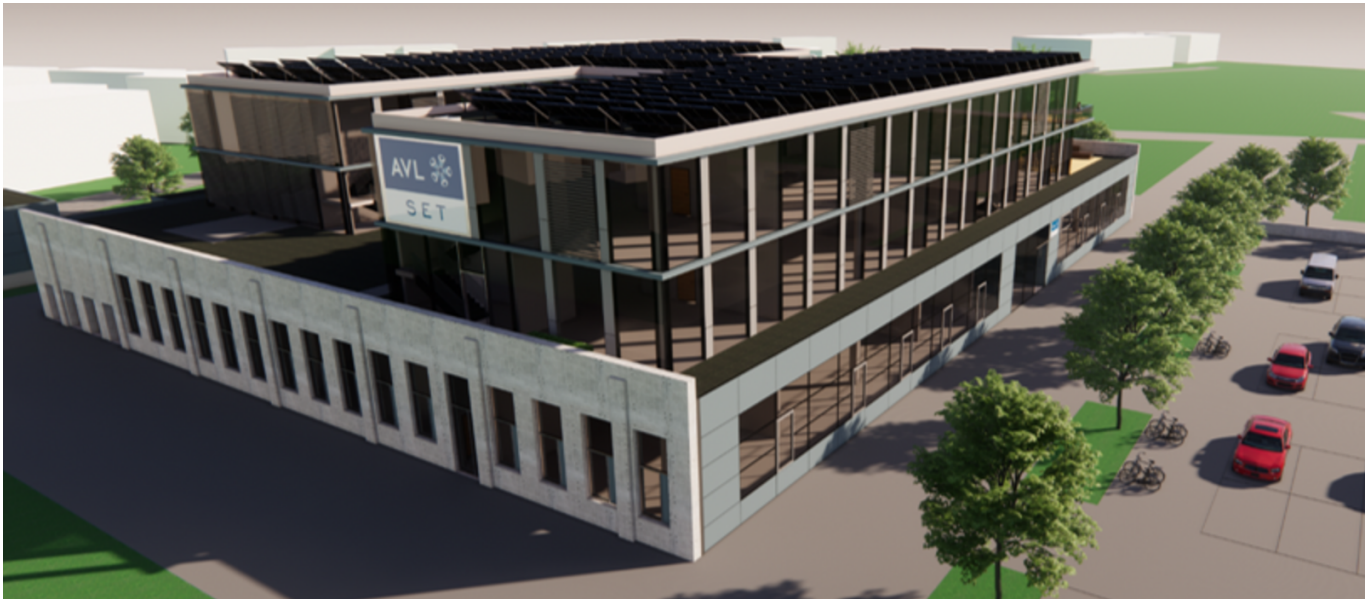


Firmensitz und Produktion AVL SET GmbH, Wangen im Allgäu



SHORT DESCRIPTION

Turnkey production headquarters and production of AVL SET GmbH

THE PROJECT

AVL SET GmbH is part of the AVL Group and a leading international supplier of test systems for testing e-motor control units. In 2003, it established a new test methodology in which a virtual e-machine simulates the test bench in the laboratory and frees it from the dependence on a mechanical environment for testing auxiliary units up to powerful drive inverters. The new headquarters and production facilities of AVL SET GmbH are being built on the former site of the Erba weaving mill. The company, which is flourishing due to e-mobility, had only moved into the previous administration building in 2017 and is already bursting at the seams with its approx. 130 employees. On top of a 3,500 m² and five-metre high production floor, two double-storey glazed administration floors with a total of 3,100 m² are planned and designed for 250 people. An extension to the east is already being considered. The main entrance on the west side will have a representative glass façade and coffered façade; on the north and south façades, prefabricated concrete elements with projections will imitate the former factory wall. This is a turnkey construction including building services and BIM-supported implementation planning. An ambitious schedule can still be optimised through LEAN systems.

SERVICES IN DETAIL

- Soil replacement
- Detailed design with BIM
- Turnkey construction incl. TGA

CHALLENGES

Remediation of contaminated subsoil

SUSTAINABILITY

Production for e-mobility - PV system, Local heating and cooling - Design constraints imposed by the 2024 Landesgartenschau on the site - No occupational accident so far

FACTS

Location	Spinnerei 8 , Wangen im Allgäu , Germany
Status	completed
Construction volume (value of our services)	12.4 M EUR
Start of construction	February 2021
Completion	March 2022
Building owner	Objektgesellschaft der DAL-Gruppe: Dalias Grundstücksverwaltungsgesellschaft mbH & Co. Vermietungs KG Emy-Roeder-Str. 2 55129 Mainz
Contracting entity	AVL SET GmbH Franz-Joseph-Spiegler-Str. 5 88239 Wangen im Allgäu

SERVICES

Civil engineering

Industrial construction



<https://implenia.com/en/references/detail/ref/firmensitz-und-produktion-avl-set-gmbh-wangen-im-allgaeu/>

Creation: 31.03.2026 12:55