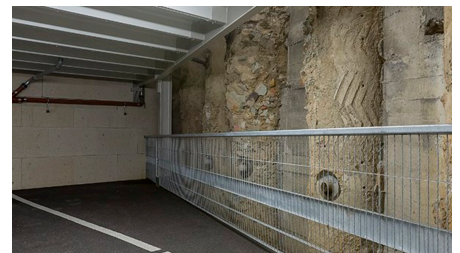
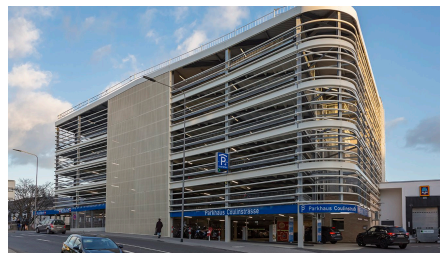
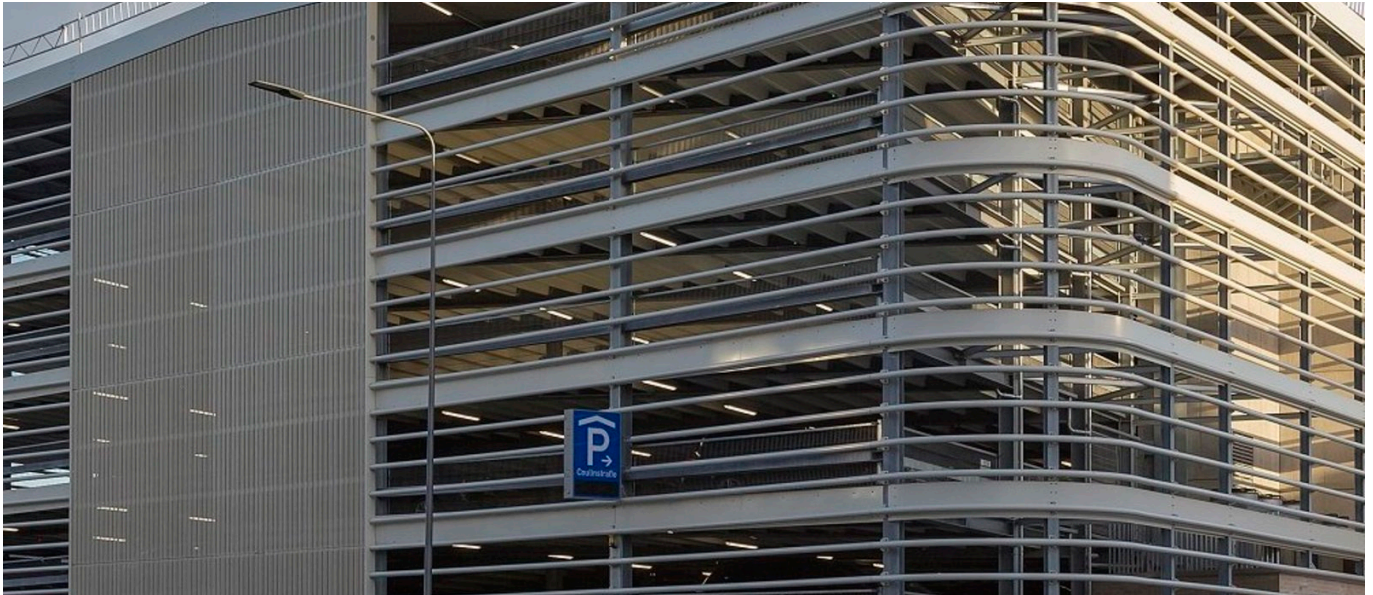


Coulinstraße multi-storey car park



SHORT DESCRIPTION

Implenia developed and constructed the Coulinstraße multi-storey car park in the centre of Wiesbaden, the capital of the federal state of Hesse. In addition to user-friendly parking facilities, the development also includes modern retail spaces.

THE PROJECT

The contract for the demolition, new construction and 30-year operation of the city-centre Coulinstraße multi-storey car park was transferred to Implenia PH Coulinstraße GmbH by the City of Wiesbaden on the basis of a leasehold agreement. The Buildings branch in Karlsruhe was awarded the contract by the company to provide general contractor services. The key to winning this contract was the close coordination between multiple divisions of Implenia, and the pooled expertise this arrangement would offer.

SERVICES IN DETAIL

- The existing car park, which was situated directly by the pedestrian zone in the city centre, had to be demolished for structural reasons.
- The new multi-storey car park has 363 spaces across its upper floors, while the ground floor contains some 2,000

square metres of retail space and is directly connected to the pedestrian zone. The access and parking areas of the car park were designed to be pillar-free, with parking spaces measuring in at 2.5 m wide and even wider spaces available for disabled and parent & child parking. The car park also contains charging points for electric vehicles.

CHALLENGES

The location of the construction site was dictated by the hillside situation beneath a busy road, the direct connection to the neighbouring building, and the city's thermal water sources.

The bored pile wall that supported the road above at a height of eleven to 13 metres was overhauled. The base slab for protecting the thermal water sources had to be removed and a new one installed for the foundation work. Owing to the local geology and the need to protect the water sources, the process of laying the new foundations was complex and time-consuming.

SUSTAINABILITY

The building's energy consumption has been lowered through the use of LED lighting, electricity from a photovoltaic system on the roof, and waste heat from the cooling systems to heat the retail spaces.

FACTS

Location	Coulinstraße 5, Wiesbaden , Germany
Status	completed
Construction volume (value of our services)	20 M EUR
Start of construction	May 2016
Completion	December 2017
Building owner	Bilfinger PH Coulinstraße GmbH
Architect	Tillmann Lange Braun & Schlockermann, Frankfurt
Number of upper floors	8
Number of parking spaces	363

SERVICES

Beraten und Planen

Schlüsselfertiges Bauen

Public & private partnerships

Real Estate

Hochbau (Deutschland)



<https://implenia.com/en/references/detail/ref/coulinstrasse-multi-storey-car-park/>

Creation: 20.04.2026 21:19