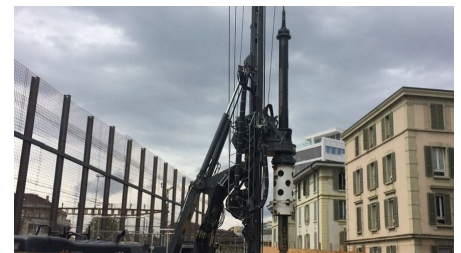


Kabel Galerie



SHORT DESCRIPTION

As part of the preparatory work for the Lausanne train station construction site, all the cables managing the region's rail activity had to be diverted. To do this, we have excavated and sealed two wells 27.00 and 22.00 deep, for the introduction of a micro tunnel machine with an external radius of 3.00 m, which will have drilled a 625 m long tunnel under the Lausanne train station. We also built 2 covered trenches to connect the existing networks to the cable gallery.

SERVICES IN DETAIL

- Construction of a 13.50 m high protective wall between the train tracks and the construction site.
- Demolition of a part of the existing car park.
- Installation of a tower crane (40 to winch).
- Primary and secondary piles (D 800mm) for wellheads, length 5.00 m and 12.00 m
- Excavation of the shafts, in the rock, advance shotcrete, 2,600 m³ excavation and 500 m³ shotcrete.
- Advancement with Micro tunnel boring machine pushes tube, 625 m, 3 m diameter.
- Underpinning of a covered trench along the train tracks
- Construction of a new covered trench along the train tracks
- Construction of a connecting gallery in a highly urban area

- Drilling of a connecting shaft to the DN 1000 mm tunnel
- Construction of a 600 m long invert in the tunnel in stages of 150 m of concrete with pumped concrete up to 300 m apart
- Construction of 2 concrete vaults for well-tunnel connections
- Construction of a concrete cavern in the tunnel
- Installation of self-supporting pre-slabs for well coverage.

CHALLENGES

- Unusual and highly technical work
- Work in highly urban areas
- Work in SBB environments
- Work in 3 shifts
- Complex logistics

FACTS

Location	Lausanne , Switzerland
Status	completed
Construction volume (value of our services)	11.5 M CHF
Start of construction	January 2016
Completion	January 2019
Building owner	CFF SA
Contracting entity	CFF SA
Project designer	Stucky SA
Construction management	Stucky SA
Construction management	Stucky SA

SERVICES

Civil engineering



<https://implenia.com/en/references/detail/ref/cable-gallery/>

Creation: 11.04.2026 04:40