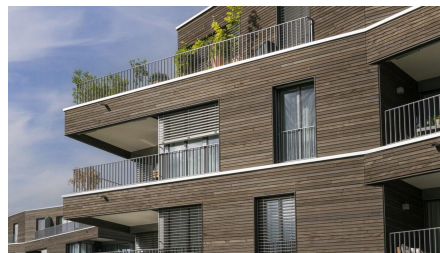


Bremgarten Wohnüberbauung Wydeweg



SHORT DESCRIPTION

On behalf of Graubünden-based general contractor Mathis Baumanagement, approx. 5000 m² of wooden facade will be installed in three stages on a total of 6 apartment buildings.

THE PROJECT

The houses are built in solid construction. The insulated wooden facade consists of wooden substructure cross-mounted with a total thickness of 200 mm. The formwork is made of pressure-impregnated and oiled rebate boards made of Emmental white fir. Soffit and lintel boards are also made of white fir in high quality, with treatment like facade formwork.

There are almost no right-angled corners on the buildings, which makes the high quality requirements even more demanding.

SERVICES IN DETAIL

- Assembly construction in wood
- 5000^{m²} wooden facade

- Cross grate insulated
- Ventilated wooden facade with
- lying formwork from white fir
- Plinth insulation made of XPS

CHALLENGES

Tight schedule. Many challenging interfaces between timber construction and other contractors involved in the facade. Almost no right-angled corners.

FACTS

Location	Wydeweg , Bremgarten , Switzerland
Status	completed
Construction volume (value of our services)	1.55 M CHF
Start of construction	January 2020
Completion	January 2022
Building owner	Luzerner Pensionskasse, 6003 Luzern
General management	Mathis Baumanagement AG, 7000 Chur
Architect	Ruch Architekten AG, 3860 Meiringen

SERVICES

Timber construction



<https://impenia.com/en/references/detail/ref/bremgarten-wohnueberbauung-wydeweg/>

Creation: 14.04.2026 18:21