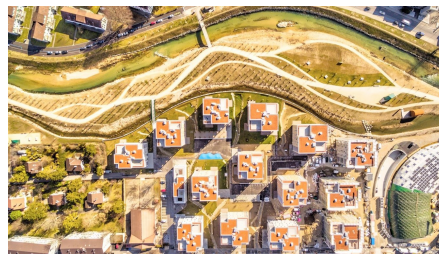


Biel Residential development Jardin du Paradis



SHORT DESCRIPTION

New construction of a residential complex with daycare centre and commercial premises near the city centre of Biel.

THE PROJECT

New construction of a residential complex with day care centre and commercial premises near the city centre of Biel. The 279 tenant-standard flats are divided into 15 buildings, each with 4-7 storeys. The surroundings were designed according to the character of the neighbourhood and the adjacent river Schüss with walkways and playgrounds.

The buildings are connected to each other on the ground floor by a parking garage with 260 parking spaces. All flats can be reached without steps from the parking garage.

CHALLENGES

The site is located in the city centre of Biel on the Schüss Island, the project which has led to various conflicts with dense construction and site installation to accommodate the large quantities of materials and construction workers.

SUSTAINABILITY

The residential development was built to the certified Minergie standard. The building owners opted for heat generation with groundwater heat pumps, which can be supported with a PV system at a later stage.

The e-mobility stations in the parking garage promote the efficient use of sustainable energy.

FACTS

Location	Biel , Switzerland
Status	completed
Construction volume (value of our services)	86.5 M CHF
Start of construction	October 2015
Completion	August 2018
Building owner	Previs Vorsorge Brückfeldstrasse 16 3001 Bern Reference person: Markus Mürner
Architect	kpa architects berne ag
Build volume	136902 m ²
Number of upper floors	7
Number of flats	279

SUSTAINABILITY

MINERGIE[®] Minergie-Standard

SERVICES

New constructions



<https://implenia.com/en/references/detail/ref/biel-residential-development-jardin-du-paradis/>

Creation: 19.04.2026 12:28