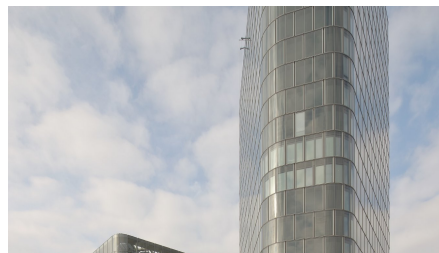


Bavaria Towers



SHORT DESCRIPTION

Star Tower and Sky Tower with panoramic views of the Alps: Implenia is constructing highly efficient high-rise office buildings for Zurich Insurance as a turnkey project.

THE PROJECT

This project is the first major high-rise building project to be approved in Munich for several years. It was preceded by years of construction planning, which was conducted in cooperation with the city administration, and an international architecture competition. The pentagon-shaped towers, designed by the architects Nieto Sobejano Arquitectos, surround a central plaza containing restaurants along with water features and green spaces.

The properties are accessed via spacious lobbies and high-speed lifts. The office floors can be split up and used in a wide variety of ways, from single offices to open-plan solutions.

SERVICES IN DETAIL

- After an extensive prequalification process, Implenia was given the task of turnkey construction of the new

46-metre-high Star Tower and the 83-metre-high Sky Tower.

- The contract represents an innovative form of cooperative partnership between building owners, developers and general contractors. The GMP/partnership model includes planning and optimisation of the project alongside execution of the work.

SUSTAINABILITY

The overall energy concept covers everything from the double-shell façade construction to the use of groundwater for heating. Both towers are being constructed with a view to achieving DGNB Gold certification.

FACTS

Location	Riedenburger Str. 2, München , Germany
Status	completed
Construction volume (value of our services)	90 M EUR
Start of construction	May 2015
Completion	November 2018
Contracting entity	Zurich Versicherung
Architect	Nieto Sobejano Arquitectos
Commercial space	38000 m ²
Number of upper floors	19
Number of basement floors	3

SUSTAINABILITY



Deutsche Gesellschaft für Nachhaltiges Bauen DGNB Gold

SERVICES

Beraten und Planen

Schlüsselfertiges Bauen

Real Estate

Hochbau (Deutschland)



<https://implenia.com/en/references/detail/ref/bavaria-towers-1/>

Creation: 17.04.2026 04:43